



Mission Success Starts With Safety



SSC Construction Contractor Safety Meeting

March 07, 2024



Mission Success Starts With Safety



Contact Info:

NASA Safety

Matthew Scott

matthew.r.scott@nasa.gov

228-688-1537

Construction Safety

Mike Rewis

mike.j.rewis@nasa.gov

228-688-2663

Construction Safety

Robert Simmers

robert.e.simmers@nasa.gov

228-688-1877

B2 Test Stand

Neil Toupin

neil.s.toupin@nasa.gov

228-688-1109

A1 Test Stand

<http://constructionsafety.ssc.nasa.gov/>



Contact Info:

NASA Safety

Pat Mitchell

James.p.mitchell-1@nasa.gov

228-688-2246

Construction Safety

Ronnie Good

ronald.w.good@nasa.gov

228-688-1487

Construction Safety

Frank Olinger

milford.f.olinger@nasa.gov

228-688-1766

Construction Safety

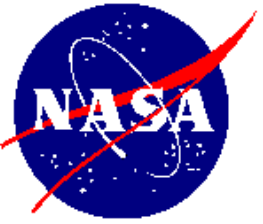
Jasper Cook

jasper.c.cook@nasa.gov

228-688-1511

Construction Safety

<http://constructionsafety.ssc.nasa.gov/>



Mission Success Starts With Safety



Contact Info:

BASTION/SACOM Safety

Mark Bridenbeck, TES

mark.a.bridenbeck@nasa.gov

228-688-1732 phone

228-313-0188 Cell

Robert Cales

robert.p.cales@nasa.gov

228-688-2462 phone

601-569-2150 Cell

Darrin Steber

darrin.r.steber@nasa.gov

228-688-2502 phone

288-688-3503 fax

Will Davis

william.b.davis@nasa.gov

228-688-3193 phone

228-688-3503 fax

<http://constructionsafety.ssc.nasa.gov/>



Mission Success Starts With Safety



Construction Safety

SSC Construction Inspection
Safety Findings/Stats

February 2024



Construction Safety Report: 01 February – 29 February 2024

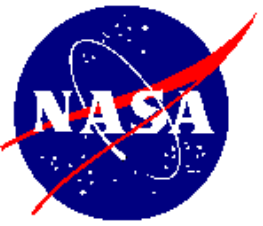
Findings: 0

Level 1 Severity : 0

Level 2 Severity : 0

NMIS Mishaps/Close Calls: 2

- On February 21, 2024, damage occurred to an existing potable water line while pulling a new section of HDPE pipe back under the road.
- On February 26, 2024, while digging to locate an existing marked electrical conduit line, the contractor struck a separate 1”PVC conduit line 2 feet away.



Mission Success Starts With Safety



8100 Water Main Damage





8100 Water Main Damage





Electrical Utility Damage





Discussion Topics

- Recall, Stop Use and Inspection Notice
- Safety Topic – VPP Goals # 3
- Ladder Safety



Recall, Stop Use Notices



Inspection Notice MSA Latchways® Guided Type Fall Arrester February 2024 PLEASE READ AND TAKE ACTION NOW

MSA Corporate Center
1000 Cranberry Woods Drive
Cranberry Township, PA 16066
800.MSA.2222
www.MSAsafety.com

Dear Valued MSA Customer,

This Inspection notice is to inform you of a one-time inspection procedure regarding the locking pin on MSA Latchways® Guided Type Fall Arresters (GTFAs) that were manufactured between February 16, 2021 and January 30, 2024. Potentially affected models are listed in Table 1 below.

MSA has received a field report of an MSA Latchways GTFa that did not have a locking pin in the nut of the swivel connector between the carabiner and main body of the unit. Without this locking pin in place, there is potential for the connection to come loose during operation.

MSA has not received any reports of injuries associated with this condition. However, we are requesting that you perform the inspection outlined in this notice prior to next use.

Table 1: Potentially Affected Model Numbers

Model Number	Material description
8100L-00T	LADDERLATCH DEVICE
3100L-00RU	LADDERLATCH ASSY/LHAND MK11RUSSIA
3103L-00	CANADIAN LADDERLATCH ASSY L/H
3104L-00	LADDERLATCH DEVICE US (L/HAND)
3100L-00AC	LADDERLATCH ASSY (L-HAND) MK2
3102L-00	TOWERLATCH L/H DEVICE
3100R-00	LADDERLATCH ASSEMBLY MK2 -R/H
3101R-00	LADDERLATCH ASSEMBLY (R/HAND) MK2
85192-00	CLIMBLATCH MK2 FINAL ASSEMBLY
3102L-00BR	TOWERLATCH L/H DEVICE
31051-00	TOWERLATCH WITH WEBBING STROP US
3102L-00AC	TOWERLATCH WITH WEBBING STROP
35429-00	TOWERLATCH S.P.
85191-00	CLIMBLATCH DEVICE
85195-00	CANADIAN CLIMBLATCH DEVICE



Figure 1: GTFa

Inspection Procedure

- 1) **Confirm Model Number and Manufacturing Date** – Refer to Figure 2
 - a. **Model Number**
 - i. Confirm that your model number is listed in Table 1.
 - ii. If your model number is not listed, no further action is needed.
 - b. **Manufacturing Date**
 - i. Confirm that your manufacturing date is between 16/02/2021 and 30/01/2024
 - ii. If the date is outside of this range, no further action is needed.



MSA Corporate Center
1000 Cranberry Woods Drive
Cranberry Township, PA 16066
800.MSA.2222
www.MSAsafety.com

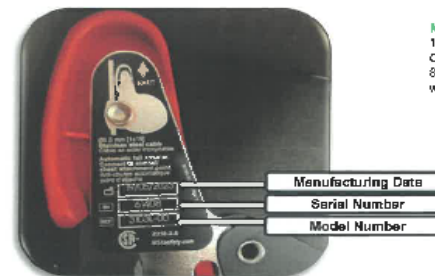


Figure 2: GTFa Inspection Data

- 2) **Inspect the product** – Visually inspect the swivel connector of the unit for the presence of the silver locking pin.
 - a. Locking pin is present (Figure 3) – no further action is needed.
 - b. Locking pin is not present (Figure 4) – remove the product from service and follow the procedure below for a replacement unit.



Figure 3: Locking Pin is Present

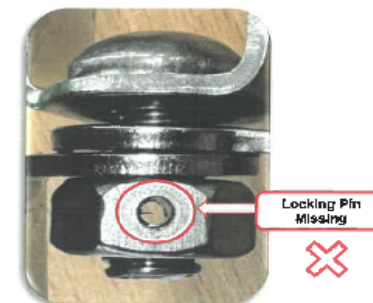
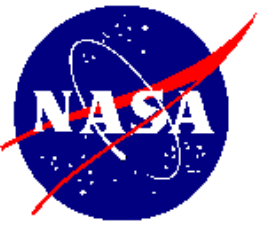


Figure 4: Locking Pin Missing



Recall, Stop Use Notices



Replacing Affected GTFA units

To receive a replacement free of charge for affected units, please scan the QR code and complete the GTFA Replacement Form. You may submit multiple forms if more than one model is affected.

Scan code or click the link:
[GTFA Replacement Form](#)



MSA Corporate Center
1000 Cranberry Woods Drive
Cranberry Township, PA 16066
890.A15A.2223
www.MSAsafety.com

MSA Customer Service Contact Information

If you have any questions regarding this Inspection Notice, please contact us as shown below:

US and Canada:
call 866-672-0005 or
E-mail us at ProductSafetyNotices@msasafety.com

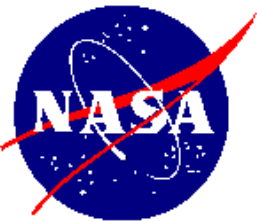
Europe, Middle East, and Africa:
Email us at ProductUserNotice@msasafety.com or contact your local MSA customer service representative

All other regions:
Contact your local MSA customer service representative.

Your safety and continued satisfaction are important to us, and we apologize for any inconvenience that this may have caused.

Best regards,

Adam Troup
Product Safety Manager



Recall, Stop Use Notices

3M Science.
Applied to Life.™

Stop Use and Recall Notification

February 2024

Immediate Action Required ⚠️

Products:

3M™ PELTOR™ X4 Series Earmuffs

Manufacturing Dates: March 2020 – September 2022

→ 3M Personal Safety Division is issuing a "Stop Use and Recall" for the 3M™ PELTOR™ X4 Series Earmuffs manufactured during a certain timeframe.

As part of 3M's ongoing commitment to delivering high-quality safety equipment, 3M is issuing a Stop Use and Recall Notice to customers for the 3M™ PELTOR™ X4 Series Earmuffs manufactured between March 2020 through September 2022. 3M has identified that X4 earmuffs manufactured during this time period may develop cracks on the exterior surface of the cups (see Appendix A). All product manufactured in this timeframe must be removed from service even if no cracks are visible on the cups. Please reference the directions below to determine the products that are impacted by this notice and any replacement instructions. There have been no reports of injuries or accidents associated with this notice.

Table 1: Affected Models

Cup Model ID	Color	Material Description	Material ID
X4A	GREEN	X4A US PELTOR OVER THE HD EARMUFFS 10/C	7000104073
X4A	ORANGE	3M PELTOR X4A- OR US 10/CS	7100097446
X4B	GREEN	X4B- US EARMUFF BACKBAND 3M PELTOR 10/CS	7100123161
X4P3	GREEN	X4P3E US PELTOR CAP ATTACH EARMUFFS 10/C	7000104078
X4P5	GREEN	3M PELTOR X4P5E US 10/CS	7100097429
X4P5	ORANGE	3M PELTOR X4P5E- OR US 10/CS	7100097526
X4P51	GREEN	X4P51E- US EARMUFF FULL BRIM 3M PELTOR	7100135827

Instructions for End Users:

Step 1: Determine if your earmuff model is affected, locate the Model ID printed on the outside of the cup (see Figure 1). Compare the Model ID on the cup to Table 1 (above). If the Model ID matches any in the table, continue to Step 2. If they do not match any in the table, your product is not affected by this Notice.

Step 2: Locate the manufacturing (mfg) date (MM/YYYY) printed on the outside of the cup (see Figure 1). If the earmuff manufacture date is on or between 03/2020 and 09/2022, your product is affected. Continue to Step 3.

Step 3: To coordinate the return of your affected product(s) for replacement visit 3m.com/PELTOR-X4-Replace to view the details and complete the electronic intake form.



Instructions for Distributors:

Upon receipt of this Notice, please contact our Customer Service department for a listing of the affected product sold to you. If you have affected inventory in stock, please return it to 3M for credit. Please immediately forward this Notice to any of your customers who have purchased affected products from you and provide any assistance requested by your customers to complete the process.

If you have any questions, please contact our Technical Service Team:

US: Call 1-800-243-4630 or email psdtechnicalsupport@mmm.com

Canada: Call 1-800-267-4414 or email psdtechsupport-ca@mmm.com

3M remains committed to providing quality products and services to our customers. We apologize for any inconvenience that this situation may cause you. We appreciate your continued support of 3M Personal Safety products and services.

Appendix A: Examples of cracking



Personal Safety Division
3M Center, Building 225-2W-70
St. Paul, MN 55144-1000

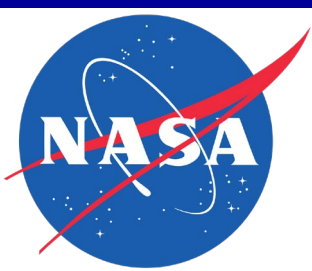
3M Canada
P.O. Box 5757
London, Ontario
NEA 4T1

In United States of America
Technical Service 1-800-243-4630
Customer Service 1-800-328-1667
[3M.com/hearing](https://3m.com/hearing)

In Canada
Technical Service 1-800-267-4414
Customer Service 1-800-410-6880
[3M.ca/hearing](https://3m.ca/hearing)

© 3M 2024. All rights reserved.
3M and PELTOR are trademarks of 3M Company and its affiliates, used under license in Canada.

Used under license in Canada. All other trademarks are property of their respective owners.
Please recycle.



SSC 2024 VPP Goal #3

INCREASE EMPLOYEE AWARENESS ON HOW TO PREVENT FINGER, HAND, AND ARM INJURIES



Who is At Risk for Hand Injuries?

Everyone is potentially at risk for hand injuries. Regardless of gender, age, or industry, employers should always take steps to protect employees from even minor bumps and bruises. However, there are certain groups of employees who may be at a higher risk. Less-experienced workers, for example, or those whom the Occupational Safety and Health Administration considers to be new to the workforce, may be at higher risk for injuries at work. Whether it's due to less on-the-job experience or a heightened sense of pressure to complete tasks quickly, employers should take special care especially with less-experienced workers.

What Are Common Types of Hand Injuries?

The hands are incredibly versatile, but they're also exposed to a variety of threats that can result in injuries ranging from minor cuts and bruises to serious lacerations and burns. Some of those injuries include lacerations, crushes, avulsions or detachments, punctures, and fractures.

Where Are Hand Injuries the Most Common?

Hand injuries are not limited to just one industry. They happen every day across a wide variety of jobs, companies, and work sites. They range from carpal tunnel syndrome in an office setting to burns at a chemical plant. However, employees who work in construction and manufacturing industries may be at greater risk for hand injuries. Construction, for example, not only involves the use of hammers, saws, and other tools, but also the regular use of large heavy machinery, including bulldozers, dump trucks, and cement mixers.



Hand injuries occur when employees are distracted and aren't focused on where they are or what they're doing. Eliminate distractions and stay focused on the task at HAND!



BEFORE YOU CLIMB...

Ladder Safety Basics

The following three questions can help you identify and correct workplace safety hazards before ascending a ladder:

1. Is the ladder in proper working order?

To ensure the ladder is in proper working order, follow your center's ladder inspection requirements, as well as the manufacturer's labeling instructions.

- Perform a complete ladder inspection before use to identify any potential structural issues.
- Ensure the locking mechanism is correctly engaged before using the ladder.

2. Do I know how to use this ladder safely?

Complete training ahead of time to learn how to properly set up and inspect each type of ladder you'll be using. Use the ladder as your training prescribes every single time you climb.

3. Is this the right ladder for the job?

Choose the right-sized ladder for the job. If the work is temporary, a portable ladder should be adequate, but if the work is permanent, a fixed ladder should be used instead.

Falls from portable ladders (step, straight, combination and extension) are one of the leading causes of occupational fatalities and injuries.

Every ladder-related mishap is preventable if you take the time to ensure your safety before you climb.

Can You Read It?

Be label savvy and observe all warning labels, which are different for each type of ladder.



Use the buddy system

Inspect the ladder to make sure it's in proper working order



Face the ladder while climbing it

Watch out for electrical and overhead hazards

Wear the right gear and Personal Protective Equipment

Use a towline or bucket and pulley system to transfer tools

Climb one rung at a time using three points of contact

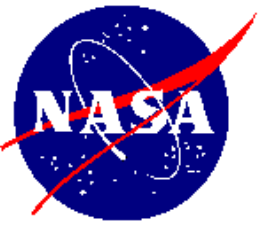
Place the ladder on a firm, level, stable and clean surface

Observe all ladder safety information labels

Ensure locks are fully engaged

Ensure proper lighting





Questions



<http://constructionsafety.ssc.nasa.gov/>