



Mission Success Starts With Safety



SSC Monthly Construction Contractor Meeting

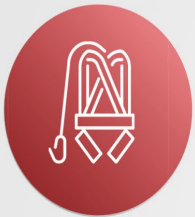
Safety Presentation

OSHA FY23 Stats & Focus 4 Hazards

September 05, 2024

Top 10 Most Cited Standards

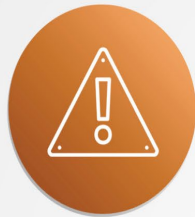
FY 2023



1

Fall Protection: General Requirements

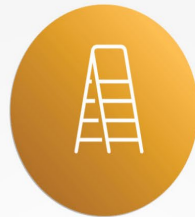
1926.501
7,188 violations



2

Hazard Communication

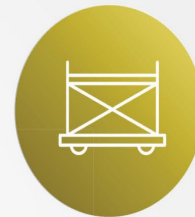
1910.1200
3,227 violations



3

Ladders

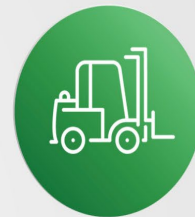
1926.1053
2,950 violations



4

Scaffolding

1926.451
2,835 violations



5

Powered Industrial Trucks

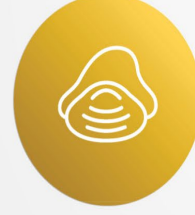
1910.178
2,550 violations



6

Control of Hazardous Energy (Lockout/Tagout)

1910.147
2,539 violations



7

Respiratory Protection

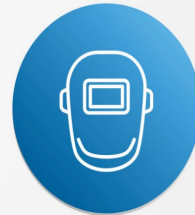
1910.134
2,493 violations



8

Fall Protection: Training Requirements

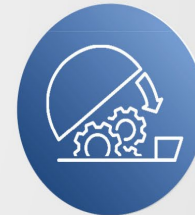
1926.503
2,109 violations



9

Personal Protective and Lifesaving Equipment: Eye and Face Protection

1926.102
2,064 violations



10

Machine Guarding

1910.212
1,635 violations

Focus Four Hazards



Falls



Caught-In
or -Between



Struck-By



Electrocution

Top Four Construction Hazards

The top four causes of construction fatalities are: Falls, Struck-By, Caught-In/Between and Electrocutions.

Prevent Falls

- Wear and use personal fall arrest equipment.
- Install and maintain perimeter protection.
- Cover and secure floor openings and label floor opening covers.
- Use ladders and scaffolds safely.



Prevent Struck-By

- Never position yourself between moving and fixed objects.
- Wear high-visibility clothes near equipment/vehicles.



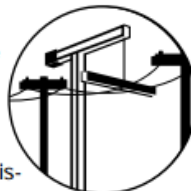
Prevent Caught-In/Between

- Never enter an unprotected trench or excavation 5 feet or deeper without an adequate protective system in place; some trenches under 5 feet deep may also need such a system.
- Make sure the trench or excavation is protected either by sloping, shoring, benching or trench shield systems.



Prevent Electrocutions

- Locate and identify utilities before starting work.
- Look for overhead power lines when operating any equipment.
- Maintain a safe distance away from power lines; learn the safe distance requirements.
- Do not operate portable electric tools unless they are grounded or double insulated.
- Use ground-fault circuit interrupters for protection.
- Be alert to electrical hazards when working with ladders, scaffolds or other platforms.



For more complete information: