

Excavations

Subpart P

Safety Excellence

Why the Training?

- People die in excavations!
 - See Fatal Facts
- Regulations
 - 29 CFR 1926, Subpart P



Safety Excellence

Regulations

- 29 CFR 1926 Subpart P - Excavations

- ◆ Appoint Competent Person

- Soil evaluations by Competent Person
- Daily Inspections by Competent Person
- Shoring and sloping evaluations by Competent Person
- Stop Work Authority of Competent Person



Safety Excellence

Competent Person

- "Competent person" means one who is capable of identifying existing and predictable hazards in the surroundings or working conditions which are unsanitary, hazardous, or dangerous to employees, and who has authorization to take prompt corrective measures to eliminate them.

Safety Excellence

Competent Person

- **Qualifications**
 - ◆ **Knowledge of soils and soil classification**
 - ◆ **Understands design and use of protective systems**
 - ◆ **Ability to recognize and test hazardous atmospheres**
 - ◆ **Documented training**
 - ◆ **Prior excavation experience**

Safety Excellence

Competent Person

- Responsibilities
 - ◆ Site safety briefings on excavation safety
 - ◆ Daily excavation inspections
 - More frequent if conditions change (e.g. freeze/thaw, rain, vibration)
 - ◆ Physically located at the excavation



STOP WORK AUTHORITY!!!

Safety Excellence

Excavation Hazards

- ◆ Surface encumbrances
- ◆ Utilities
- ◆ Access/Egress
- ◆ Vehicle traffic
- ◆ Falling loads
- ◆ Mobile equipment
- ◆ Hazardous atmospheres
- ◆ Water accumulation
- ◆ Adjacent structures
- ◆ Loose rock or soil
- ◆ Falls
- ◆ Cave-in

Safety Excellence

Access/Egress

- Note: Poor housekeeping --- # 1 cause of slips, trips and falls on construction projects
 - ◆ Debris kept cleared from work areas
 - ◆ Mark hazards
 - ◆ Barricade or cover holes
- Egress provided-
 - ◆ 25' travel distance
 - ◆ ladders
 - ◆ ramps
 - ◆ stairs



Safety Excellence

Exposure to Falling Loads



- No work under loads
- Operators remain in cab

Safety Excellence

Mobile Equipment

- Warning system
 - ◆ Barricades
 - ◆ Hand signals
 - ◆ Mechanical signals
 - ◆ Stop logs
 - ◆ Grade away from excavation



Safety Excellence

Hazardous Atmospheres

- Test @ 4' if suspected
 - ◆ LEL
 - ◆ Oxygen
 - ◆ CO
 - ◆ H₂S
 - ◆ Petroleum
 - ◆ Other toxics



Safety Excellence

Ventilation

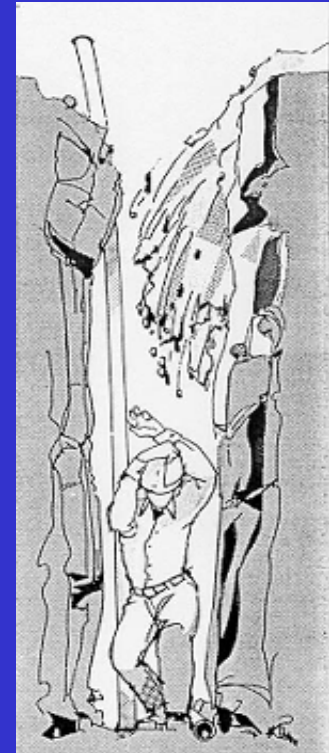
- Displace hazardous gases and vapors
- Considerations
 - ◆ Heavier than air or lighter than air contaminant
 - ◆ Exhausting or blowing in
 - ◆ Volume/time required to lower concentrations to acceptable levels



Safety Excellence

Loose Rock and Soil

- Protection of employees from loose rock or soil
 - ◆ Scaling
 - ◆ Protective barriers
 - ◆ Placing material at least 2' from edge
 - ◆ No work on slopes above workers



Safety Excellence

Soil Classification

- Soil Classification (Type A,B,or C) determines construction of protective system:
 - ◆ Sloping or benching
 - ◆ Shoring
 - Timber shoring
 - Aluminum shoring

Safety Excellence

Protective Systems

- Required unless:
 - ◆ Excavation in stable rock
 - ◆ Excavation less than 5 ‘ (4’ some states) and examination by Competent Person determines no potential for cave-in



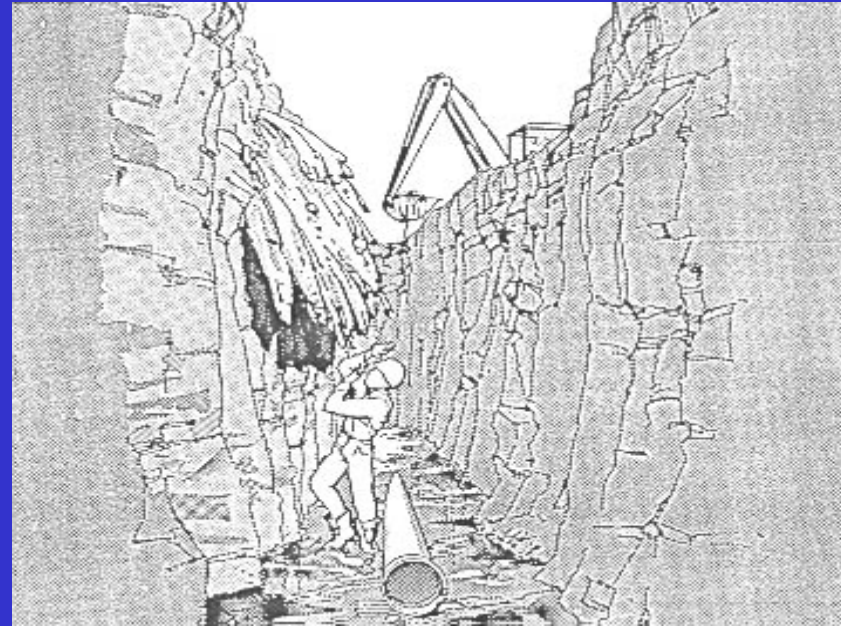
- YO!



Safety Excellence

Protective Systems

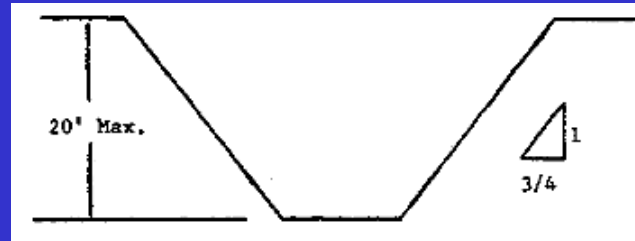
- Options Include:
 - ◆ Sloping and benching
 - ◆ Shoring/sheet piling/shielding (e.g.trench boxes)
 - ◆ Designed by P.E. if deeper than 20'



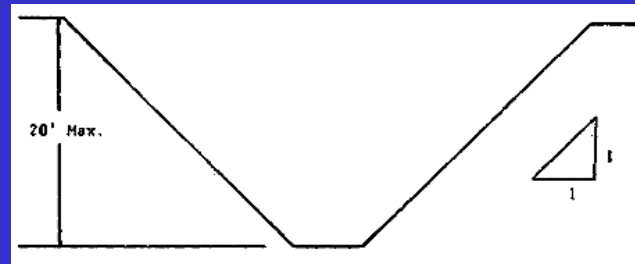
Safety Excellence

Simple Sloping

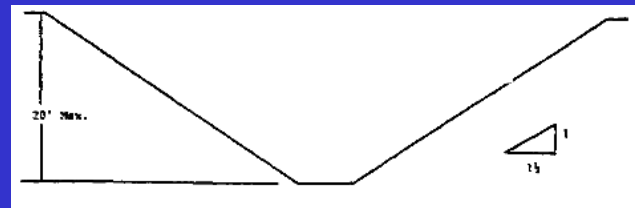
- Type A - 3/4:1



- Type B - 1:1



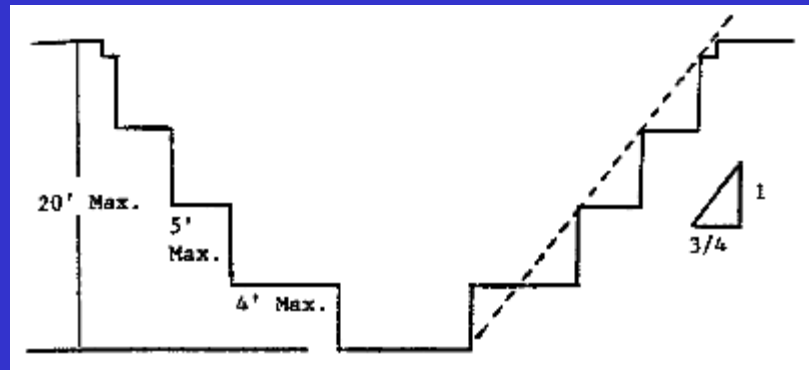
- Type C - 1½ :1



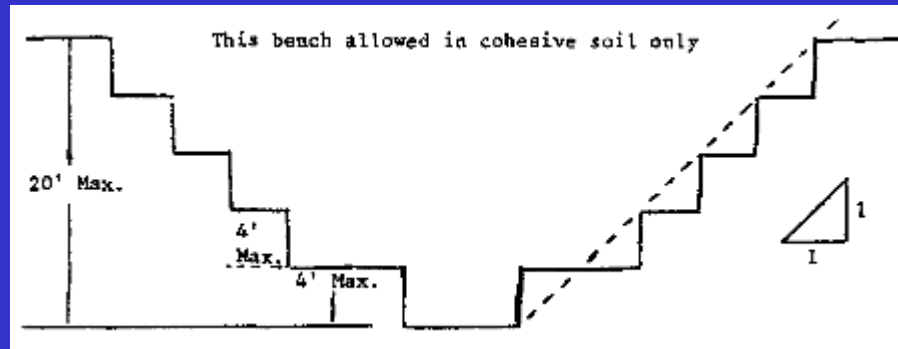
Safety Excellence

Benching

- Type A



- Type B
 - (cohesive soil)



- Type C

NA

Safety Excellence

Shoring

- Based on OSHA Appendices
- Based on Manufacturer data
- Designed by a P.E.



Safety Excellence

Excavation Inspections

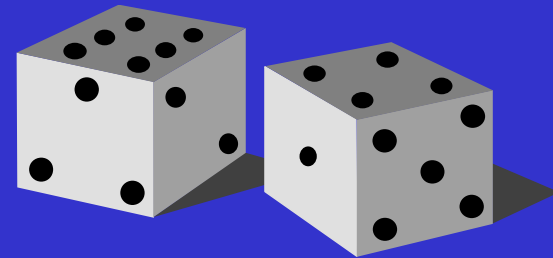
- Daily Inspections of ALL excavations by Competent Person
 - ◆ Start of shift, as needed, following rainstorms or other hazard-increasing event
 - Possible cave-ins
 - Protective system failure
 - Water accumulation
 - Hazardous atmospheres
 - ◆ Competent person has authority to remove workers from the excavation

Safety Excellence

Excavation Rescues

- The best rescue is the one you never have to make!
 - ◆ Practice proper procedures
 - Make sure everything is safe before anybody goes in!

DON'T ROLL THE DICE!!!



Safety Excellence