

Mission Success Starts With Safety



Construction Safety

SSC Construction Inspection
Safety Findings/Stats

May 2016



Mission Success Starts With Safety



Contact Info:

NASA Safety

Mike Rewis

mike.j.rewis@nasa.gov

228-688-2663 phone

288-688-3701 fax

Jesse Lamonte

jesse.m.lamonte@nasa.gov

228-688-1422

228-688-2760 fax

Kathy Cooper

kathy.a.cooper@nasa.gov

228-688-1747

228-688-3701 fax

<http://constructionsafety.ssc.nasa.gov/>



Mission Success Starts With Safety



Contact Info:

BASTION/SACOM Safety

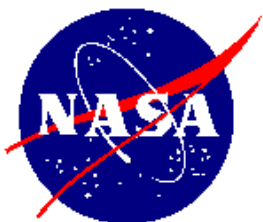
Daryl Kosturock, CHST
daryl.kosturock-1@nasa.gov
228-688-3641 phone
228-688-3701 fax

Donald Smith, CHST
donald.g.smith-1@nasa.gov
228-688-1085
228-688-3701 fax

John Lindsay, CSP
john.d.lindsay@nasa.gov
228-688-2557 phone
288-688-3503 fax

Robert Necaise
robert.j.necaise@nasa.gov
228-688-2049 phone
288-688-3503 fax

<http://constructionsafety.ssc.nasa.gov/>



Construction Safety Findings: 02-06 May 2016

Findings Total: 1

Serious Findings: 0

Less than Serious Findings: 1

1. Inspector observed an electrical extension cord in use with the ground pin missing from the male end of the cord, 29 CFR 1926.404(b)(iii)(c).

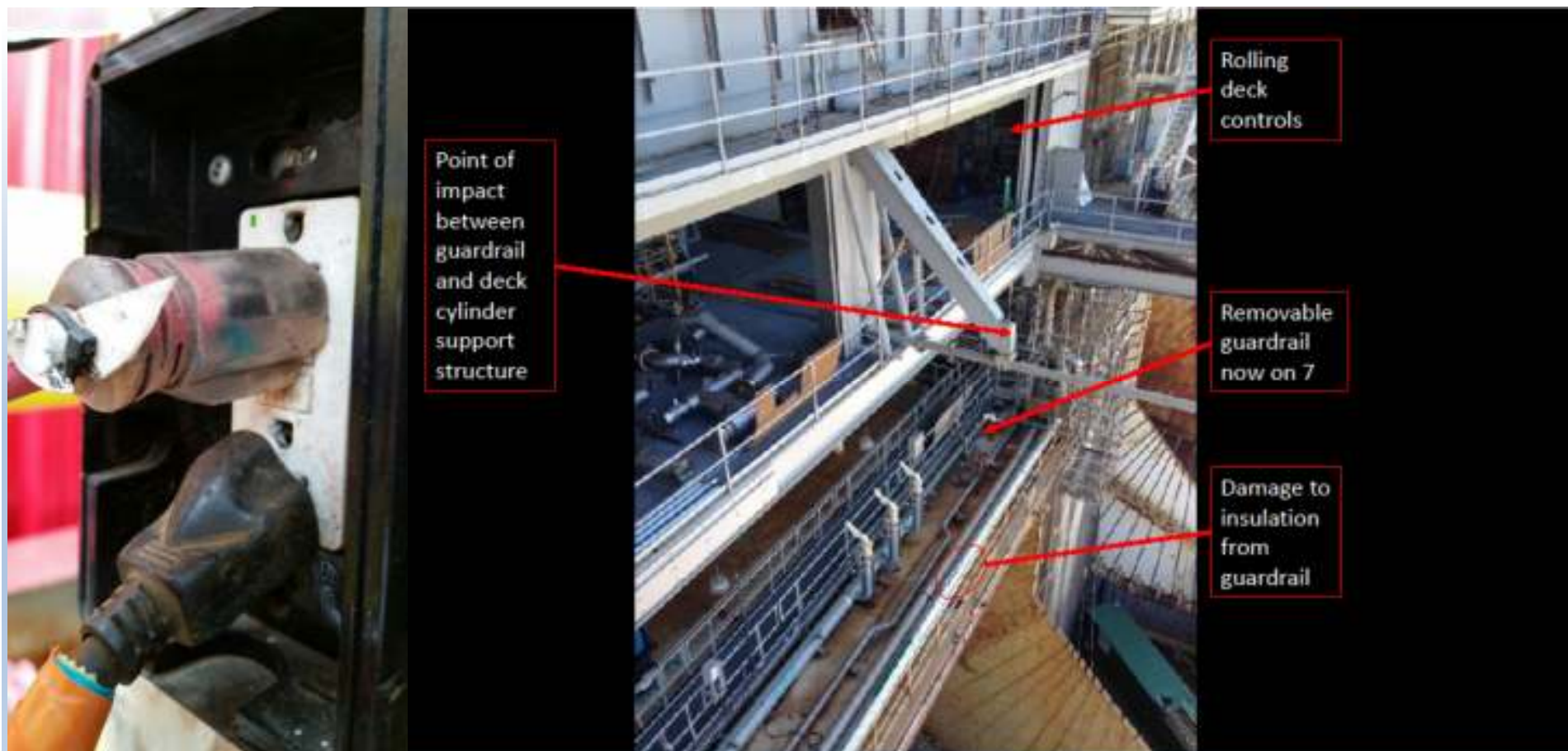
Mishaps / Close Calls: 1

Close Call (CCRS/NMIS): 1

1. Close Call (CCRS)16-029, B-2 Level 8 Rolling Deck; While an employee was rolling the north deck into position, a section of removable handrail came into contact with the structure. The handrail detached from the deck and fell to the level 7 north, box beam area. At the time of the incident, there were two construction employees painting in the vicinity the handrail landed that could have been injured. It was later determined that a section of vacuum jacketed piping may have been damaged from the impact. Upon receipt of this Close Call, NASA SMA determined this case should be transferred to the NASA Mishap Information System (NMIS). The SACOM Safety Office was notified of this case and took lead on the investigation. That investigation is currently in progress, under NMIS case number 16-100628.



Construction Safety Findings: 02-06 May 2016





Mission Success Starts With Safety



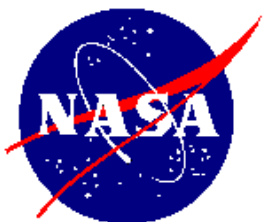
Construction Safety Findings: 9-13 May 2016

Findings Total: 0

Serious Findings: 0

Less than Serious Findings: 0

Mishaps / Close Calls: 0



Construction Safety Findings: 16-20 May 2016

Findings Total: 0

Mishaps / Close Calls: 1

Close Call (CCRS/NMIS): 1

1. Close Call (CCRS) 16-031: "It appears an individual is painting on exterior level 7 North exposing himself to a fall of 7 floors. He was not wearing any fall protection. This was witnessed by two safety professionals looking at him painting. This close call should be investigated, with an emphasis on locating this employee to explain why fall protection was required. The activity hazard analysis should be evaluated." (This Close call is under investigation.)

Other: 1

1. The large lattice boom crane used for construction was prepared for potential severe weather over night by having the boom rested on the ground. When workers returned the next morning, they found the boom moved, apparently from the strong wind. The aircraft obstruction light contacted the concrete wall of the spillway and broke. The contractor properly reported this incident and the determination was made to not enter this as a NASA incident, due to an Act of God.

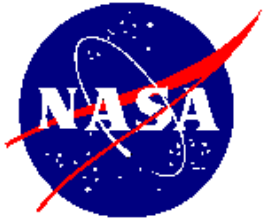


Mission Success Starts With Safety



Construction Safety Findings: 16-20 May 2016

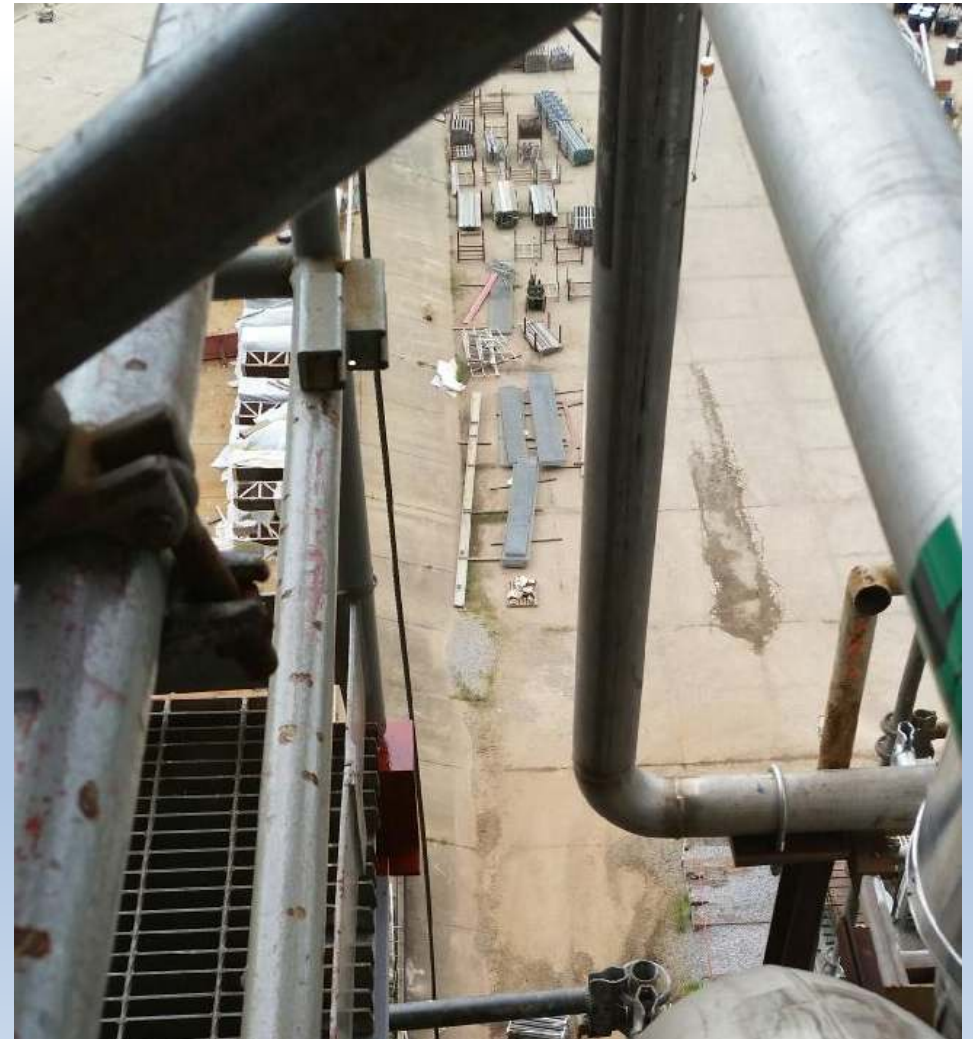


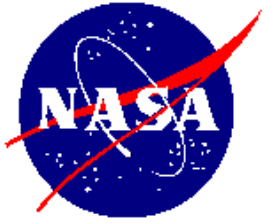


Mission Success Starts With Safety



Construction Safety Findings: 16-20 May 2016



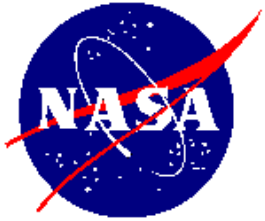


Mission Success Starts With Safety



Construction Safety Findings: 16-20 May 2016





Construction Safety Findings: 23-27 May 2016

Findings Total: 0

Serious Findings: 0

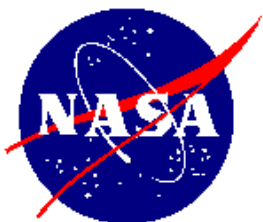
Less than Serious Findings: 1

On May 23, an extension cord was found at the A-TCC with improper strain relief.

Mishaps / Close Calls: 1

Mishap (Lost Time/NASA Type C): 1

On 5/27, at about 8:30 AM, a 5' 3" x 3/4" piece of threaded rod (all-thread) fell approximately 30-40 feet from elevation 320' to level 18, where it struck a construction worker. The all-thread hit the worker on the bill of the hard hat, then struck them on the back, to the left of their spine at the base of the neck. As a welder, the injured party wore their hard hat with the bill toward the back, thus the hard hat took the brunt of the hit. A nearby worker called the supervisor, who notified emergency response. The worker had some bruising/swelling on the neck so the supervisor applied ice while waiting for the fire department, who subsequently transported them to the clinic where first aid was administered. The worker was then taken to a local hospital where the physician's orders required time off until a neurosurgeon could be consulted. (NMIS Close Call/16-100742)



Mission Success Starts With Safety



Construction Safety Findings: 23-27 May 2016





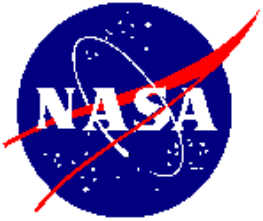
Mission Success Starts With Safety



Construction Safety

Questions?

<http://constructionsafety.ssc.nasa.gov/>



Mission Success Starts With Safety



Construction Safety

Heat is dangerous! But, do not forget about your own safety during all the other summer activities...

Have a Safe month!



Mission Success Starts With Safety



Construction Safety



Have a Safe month!