

ELECTRICAL HAZARDS AND REQUIREMENTS

- ASSURED GROUNDING PROGRAM
- GFCI-Ground fault circuit interrupter
- TESTING REQUIREMENTS
- DOCUMENTATION



ASSURED GROUNDING PROGRAM

- 1926.404(b)(1)(iii) Assured equipment grounding conductor program. The employer shall establish and implement an assured equipment grounding conductor program on construction sites covering all cord sets, receptacles which are not a part of the building or structure, and equipment connected by cord and plug which are available for use or used by employees. This program shall comply with the following minimum requirements:

- A written description of the program, including the specific procedures adopted by the employer, shall be available at the jobsite for inspection and copying by the Assistant Secretary and any affected employee.
- The employer shall designate one or more competent persons (as defined in 1926.32(f)) to implement the program.

- Each cord set, attachment cap, plug and receptacle of cord sets, and any equipment connected by cord and plug, except cord sets and receptacles which are fixed and not exposed to damage, shall be visually inspected before each day's use for external defects, such as deformed or missing pins or insulation damage, and for indications of possible internal damage. Equipment found damaged or defective shall not be used until repaired.

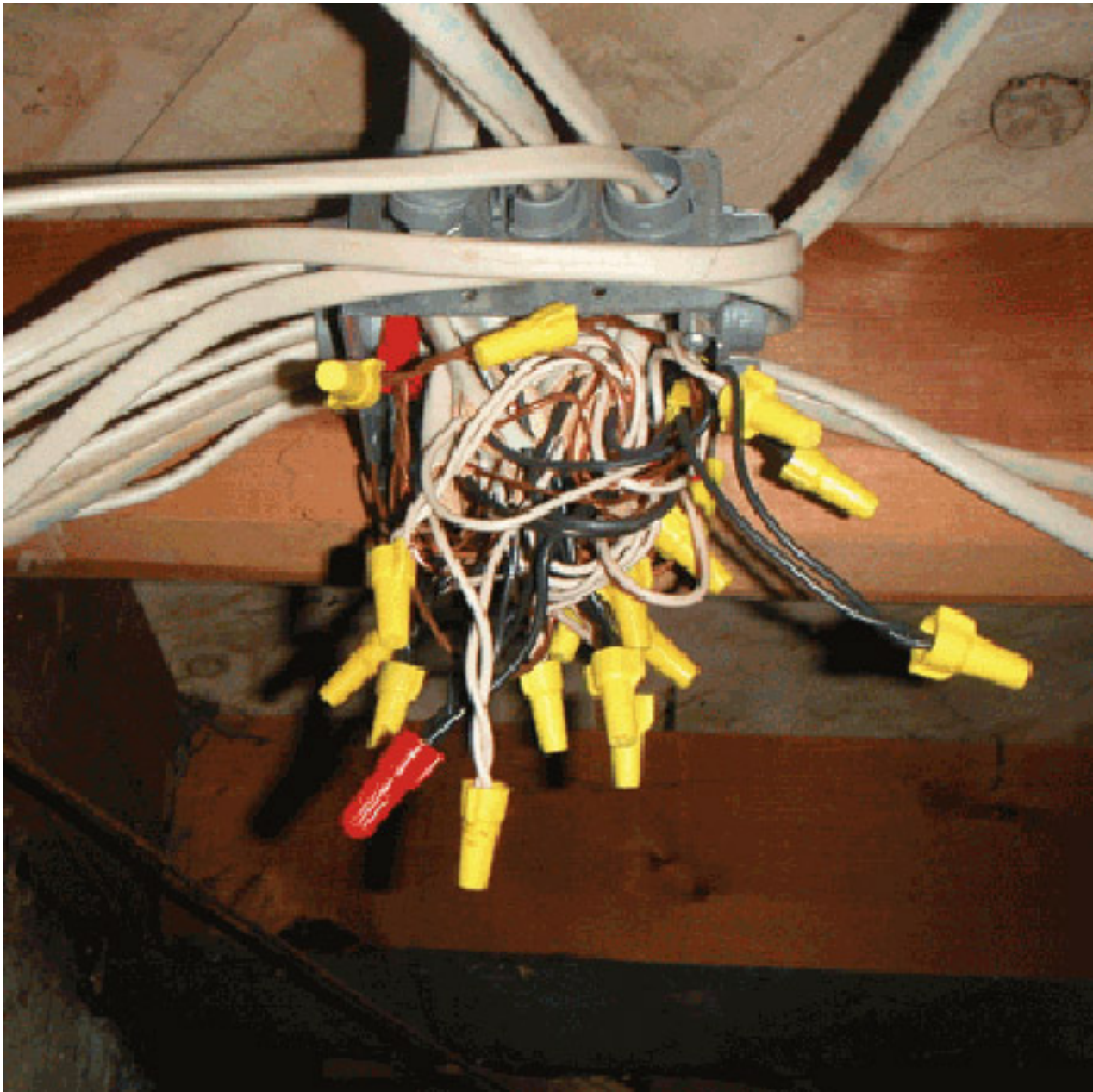
- The following tests shall be performed on all cord sets, receptacles which are not a part of the permanent wiring of the building or structure, and cord- and plug-connected equipment required to be grounded:
- All equipment grounding conductors shall be tested for continuity and shall be electrically continuous.

- Each receptacle and attachment cap or plug shall be tested for correct attachment of the equipment grounding conductor. The equipment grounding conductor shall be connected to its proper terminal.
- All required tests shall be performed:
- Before first use;
- Before equipment is returned to service following any repairs;

- Before equipment is used after any incident which can be reasonably suspected to have caused damage (for example, when a cord set is run over); and
- At intervals not to exceed 3 months, except that cord sets and receptacles which are fixed and not exposed to damage shall be tested at intervals not exceeding 6 months.

- Tests performed as required in this paragraph shall be recorded. This test record shall identify each receptacle, cord set, and cord- and plug-connected equipment that passed the test and shall indicate the last date it was tested or the interval for which it was tested. This record shall be kept by means of logs, color coding, or other effective means and shall be maintained until replaced by a more current record. The record shall be made available on the jobsite for inspection by the Assistant Secretary and any affected employee.





1926.404(b)(1) Ground-fault protection

- General. The employer shall use either ground fault circuit interrupters as specified in paragraph (b)(1)(ii) of this section. These requirements are in addition to any other requirements for equipment grounding conductors.

- Ground-fault circuit interrupters. All 120-volt, single-phase 15- and 20-ampere receptacle outlets on construction sites, which are not a part of the permanent wiring of the building or structure and which are in use by employees, shall have approved ground-fault circuit interrupters for personnel protection. Receptacles on a two-wire, single-phase portable or vehicle-mounted generator rated not more than 5kW, where the circuit conductors of the generator are insulated from the generator frame and all other grounded surfaces, need not be protected with ground-fault circuit interrupters.



CAUTION

conductors only!
not designed
for use with other
types of conductors.

OFF

BURNER

ON



OFF

EMERGENCY

Remember Safety is
your responsibility