

Mission Success Starts With Safety



Construction Safety

SSC Construction Inspection
Safety Findings/Stats

July 2014



Mission Success Starts With Safety



Contact Info:

NASA Safety

Mike Rewis

mike.j.rewis@nasa.gov

228-688-2663 phone

288-688-3701 fax

Robert Southers

robert.l.southers@nasa.gov

228-688-1324 phone

228-688-3701 fax

Kathy Cooper

kathy.a.cooper@nasa.gov

228-688-1747

228-688-3701 fax

<http://constructionsafety.ssc.nasa.gov/>



Mission Success Starts With Safety



Contact Info:

BASTION/FOSC Safety

Daryl Kosturock, CHST

daryl.kosturock-1@nasa.gov

228-688-3641 phone

228-688-3701 fax

Donald Smith, CHST

donald.g.smith-1@nasa.gov

228-688-1085

228-688-3701 fax

John Lindsay, CSP

john.d.lindsay@nasa.gov

228-688-2557 phone

288-688-3503 fax

Robert Necaise

robert.j.necaise@nasa.gov

228-688-2049 phone

288-688-3503 fax

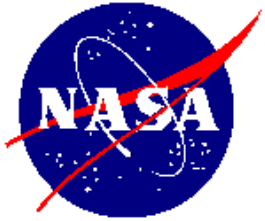
Darrin Steber

darrin.r.steber@nasa.gov

228-688-2502 phone

288-688-3503 fax

<http://constructionsafety.ssc.nasa.gov/>



Construction Safety Findings: 07-11 July 2014

Findings Total: 1

-Serious Findings: 1

1. Subcontractor employee installing stair risers on a Level 7 platform elevated above the guard rail system without adequate fall protection. 29CFR1926.501(b)(1)

-Less than Serious Findings: 0

Mishaps / Close Calls: 3

-Close Calls:

1. A welding supervisor accidentally dropped a steel lifting pad eye from Level 8 of the B-2 test stand. The pad eye fell through an opening by the wall and free fell to the ground landing about two feet from the stand wall. No injuries or damages noted.
2. One piece of removed scrap debris metal fell through level 7 toe-board to ground. The debris pile was close to rolling deck toe-board where a half inch gap exists. No injuries or damages noted. The area was cleaned up and metal pile was removed.
3. A flatbed truck driver misjudged the turn into the staging area and the right rear wheels of the flatbed became stuck in the adjacent ditch. No injuries occurred and there was no damage to the truck or the cargo.





Construction Safety Findings: 14-18 July 2014

Findings Total: 0

-Serious Findings: 0

-Less than Serious Findings: 0

Mishaps / Close Calls: 2

-Mishap: 1

1. A scaffold erector employee tripped over a scaffold pole placed on the deck being worked and fell onto the same deck, resulting in a back injury. The SSC Fire Department responded and had to remove the employee from the Level 12 scaffold and transport to the SSC Clinic. The employee was transferred to the Ochsner Medical Center for evaluation. The employee was released with no medical treatment and issued prescription pain medication, making this an OSHA Recordable/NASA Type D Mishap at this time.

-Close Calls: 1

1. A welder developed irritation following a metal fragment falling into their eye. The welder was chipping overhead with a needle gun, with safety glasses and a welding hood on, protecting the eyes and face. The metal fragment got behind the top of the welding hood and safety glasses. The welder was brought to the SSC Fire Department and then to an off-site clinic since it was after hours and received First Aid treatment only, making this a Close Call.



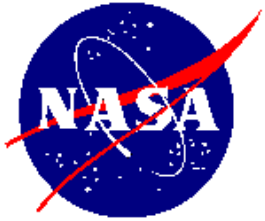
Worker laying on his back @ level 12 scaffold deck. Northwest corner of the softcore.



Scaffold components @ level 12 catwalk.



Worker was placed on a backboard and removed from the level 12 scaffold @ the level 12 catwalk access on the southwest corner of the softcore.



Construction Safety Findings: 21-25 July 2014

Findings Total: 4

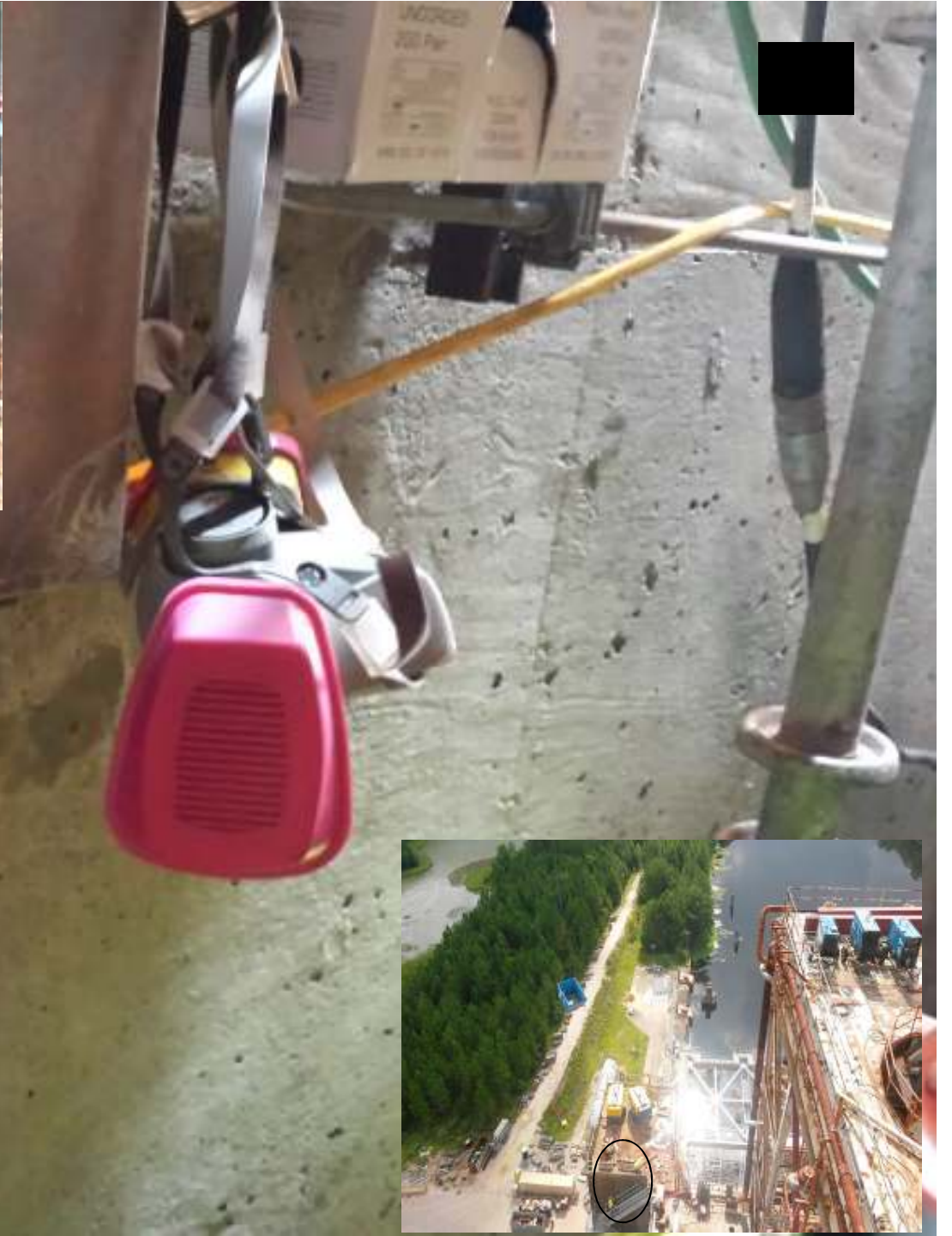
-Serious Findings: 2

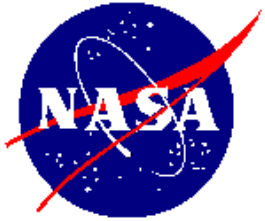
1. Subcontractor employee not wearing personal fall arrest gear climbed into an elevated skid pan not designed for human occupancy, being exposed to a life threatening fall on Work Package #3 project. 29CFR1926.501 (b)(1)
2. Subcontractor employees exposed themselves to a fall to the next level by climbing over a hand rail on Work Package #3 project. 29CFR1926.501 (b)(1).

-Less than Serious Findings: 2

1. Three subcontractor employees performing construction work in a designated construction area without safety glasses. SCWI-8715-0008 section 9.3
2. Improper storage of respirator mask. 29CFR1910.134(c)(1)(v)

Mishaps / Close Calls: 0





Construction Safety Findings: 28 July-01 August 2014

Findings Total: 1

-Serious Findings: 0

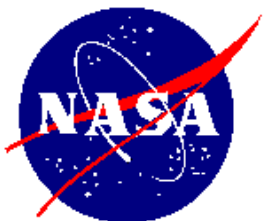
-Less than Serious Findings: 1

1. Contractor employees continue to place items and park equipment near the fire hydrant at the B Test Stand, obstructing it from being conspicuously located. 29CFR1926.150(a)(3)

Mishaps / Close Calls: 0

Other:

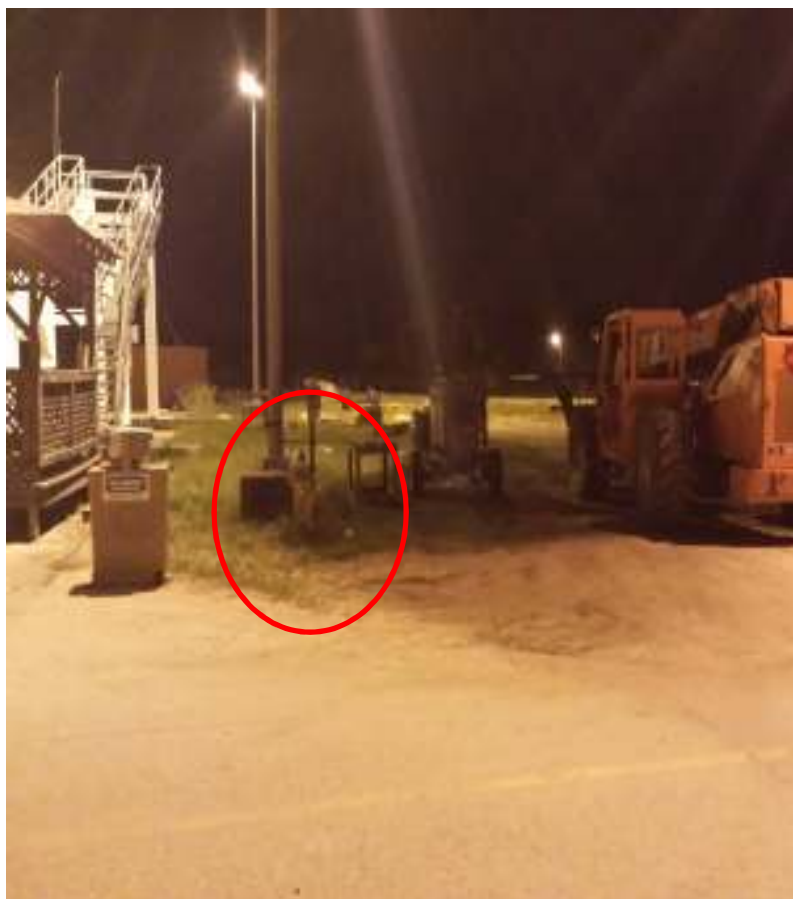
B-2 Test Stand: The construction contractors have agreed to purchase and provide magnetic strips for employee hard hats in an effort to reduce the chances of additional eye injuries from metal shavings or dust particles on the stand. Employees have reported the strips appear to be working as noted by several instances of items found attached to the strips.

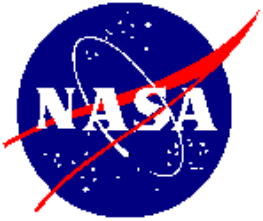


Mission Success Starts With Safety



Construction Safety Findings: 28 July-01 August 2014





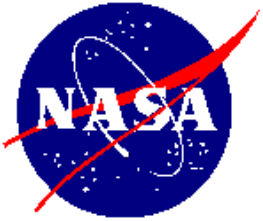
Mission Success Starts With Safety



Construction Safety

Questions?

<http://constructionsafety.ssc.nasa.gov/>



Mission Success Starts With Safety



Construction Safety

Have a Safe month!

<http://constructionsafety.ssc.nasa.gov/>